

DECEMBER 2025

FAITH UNITED METHODIST CHURCH SOUTHBAY

GOOD NEWS

SUNDAY
NOV. 30

Advent 1 begins with the **Greening of the Church, Charge Conference** at 1pm, and an **Advent Gathering of Prayer & Solidarity for Palestine** and those in ICE detention at Lakewood UMC at 4pm.

SATURDAY
DEC. 6

Advent 2 brings the **Nichigo Christmas Concert** at 2pm, a beautiful afternoon of music and community.

SAT - SUN
DEC. 6-7

LINX Lock-In at Faith UMC, a time of fellowship, games, worship, and connection for our youth.

SUNDAY
DEC. 7

marks **Advent 2** with the **Hanging of Chrismons** and a **special celebration of Doris Shighihara** with **Bishop Dottie Escobedo-Frank**.

THURSDAY
DEC. 11

features our **Panda Express Fundraiser**, a delicious way to support our ministries while sharing a meal with loved ones.

SATURDAY
DEC. 12

We gather for the **Celebration of Life for June Furuta**—please RSVP.

SUNDAY
DEC. 14

on **Advent 3**, we enjoy the **Garden Ministry's "Unrehearsed Christmas Pageant"**, along with **Faith Hula Kids** and the **Kodomo Bells**.

SATURDAY
DEC. 20

We **Celebrate the Life for Pearl Iizuka**—please RSVP

SUNDAY
DEC. 21

Advent 4, holds space for those carrying grief and longing with our **Blue Christmas service at 5pm**—a gentle, contemplative worship offering comfort and light.

WEDNESDAY
DEC. 24

Please join us for our **Christmas Eve Service at 3pm** — one service only.

SUNDAY
DEC. 28

marks the **First Sunday after Christmas**, a simple and joy-filled continuation of the season.

SUNDAY
JAN. 4

begins the new year with **Epiphany Sunday** and **All Ministries Potluck after worship**.

Christmas Ministry Parties continue throughout December—see page 13 for details.

OFFICE CLOSED DECEMBER 25, 2025 TO JANUARY 5, 2026

Insist On HOPE this Advent!

Beloved Church Family,

Luke's Gospel begins the story of Jesus' birth with a quiet but weighty detail: "In the time of Herod..." It seems like just a timestamp, but it reminds us that Christ came into a world filled with fear—political instability, widening economic divides, oppression, and uncertainty. A world not unlike our own.

Every Advent, we dare to believe that God steps into fearful times—not after the chaos settles, not once everything is safe or stable, but right in the thick of it. And throughout the nativity story, the angels whisper the same refrain: "Do not be afraid."

This year, our Advent theme from Sanctified Art asks us a courageous question:

WHAT DO YOU FEAR?

And perhaps even more importantly: What might it mean to insist on hope anyway?

When Mary, Joseph, the shepherds, and the magi encounter God's call, not one of them is fearless. Each of them—ordinary people in extraordinary circumstances—feels the tremble of uncertainty. Yet they move through their fear. They ask questions. They stay awake to God's presence. They say, "Here I am." They make room within themselves for God's good news to grow.

So this season, we are invited to name our fears—not to glorify them, and not to be ruled by them, but to speak them aloud with honesty. Fear can divide, isolate, and paralyze us. But fear can also become a point of connection when we dare to bring it into the light—into conversation with God and with one another. Only then can fear become the soil where courage, compassion, and action begin to take root.

Christ did not come into an ideal world; Christ came into Herod's world. And that means there is no fear, no grief, no uncertainty we carry that is foreign to God. God enters our vulnerability not with armor, but with an infant's cry. God meets our trembling with tenderness. God brings a hope that is not flimsy or naïve, but resilient, gritty, and insistent.

I've been thinking a lot about the mothers in the Sanctified Art reflections—the ones who learned not to hide their fears, but to let their children see them move through fear with honesty and courage. And I've been thinking about the wildflower seeds blown into the wind after the hurricane—fragile, small, and utterly brave. This is what hope looks like: small acts of trust in a world that has given us good reasons to be afraid. This is how God grows something new, even in the wake of loss.

This Advent, I pray we will insist on hope together.

Not because we are fearless.

Not because the world is simple or secure.

But because God meets us—right here, right now—and whispers again:

“Do not fear. I am with you.”

May we light our candles. May we name our fears with honesty.

May we nurture hope with insistence.

And may we trust that Christ is still breaking in with good news of great joy for all people—including us.

With hope—stubborn, shining, and shared,

Allison K. Mark

Rev. Allison,
Senior Pastor

<p>December 1st word of the day Longing</p> <p>breath prayer <i>inhale:</i> God listens <i>exhale:</i> to my deepest longings.</p>	<p>December 2nd words of the day Break in</p> <p>breath prayer <i>inhale:</i> May your light break in. <i>exhale:</i> May your love bring healing.</p>	<p>December 3rd word of the day Fear</p> <p>breath prayer <i>inhale:</i> My fears are valid, <i>exhale:</i> and God is near.</p>	<p>December 4th word of the day Possibility</p> <p>breath prayer <i>inhale:</i> God, help me see <i>exhale:</i> all that is possible.</p>	<p>December 5th word of the day Presence</p> <p>breath prayer <i>inhale:</i> When I'm afraid, <i>exhale:</i> God responds with presence.</p>
<p>December 6th word of the day Marvel</p> <p>breath prayer <i>inhale:</i> May I marvel <i>exhale:</i> at each tiny miracle.</p>	<p>December 7th word of the day Hope</p> <p>breath prayer <i>inhale:</i> Hope that trembles <i>exhale:</i> is still hope.</p>	<p>December 8th word of the day Perceive</p> <p>breath prayer <i>inhale:</i> God is making all things new, <i>exhale:</i> May I perceive it.</p>	<p>December 9th word of the day Trust</p> <p>breath prayer <i>inhale:</i> Today I will trust <i>exhale:</i> that my efforts matter.</p>	<p>December 10th word of the day Useful</p> <p>breath prayer <i>inhale:</i> When do not feel hopeful, <i>exhale:</i> help me become useful.</p>
<p>December 11th word of the day Conviction</p> <p>breath prayer <i>inhale:</i> When I feel uncertain, <i>exhale:</i> steadfast my convictions.</p>	<p>December 12th word of the day Transformation</p> <p>breath prayer <i>inhale:</i> Help me witness <i>exhale:</i> every quiet transformation.</p>	<p>December 13th word of the day Reorient</p> <p>breath prayer <i>inhale:</i> Reorient my path <i>exhale:</i> to walk humbly with God.</p>	<p>December 14th word of the day Be</p> <p>breath prayer <i>inhale:</i> Let it be. <i>exhale:</i> Let it be with me.</p>	<p>December 15th word of the day Yes</p> <p>breath prayer <i>inhale:</i> A hesitant yes <i>exhale:</i> can still be holy.</p>
<p>December 16th word of the day Courage</p> <p>breath prayer <i>inhale:</i> Help me step forward, <i>exhale:</i> even when I tremble.</p>	<p>December 17th word of the day Magnify</p> <p>breath prayer <i>inhale:</i> May I magnify the good <i>exhale:</i> that surrounds me.</p>	<p>December 18th word of the day Awaken</p> <p>breath prayer <i>inhale:</i> Awaken me <i>exhale:</i> to my fullest, radiant self.</p>	<p>December 19th word of the day Vulnerability</p> <p>breath prayer <i>inhale:</i> Deep vulnerability <i>exhale:</i> can create deep possibility.</p>	<p>December 20th word of the day Love</p> <p>breath prayer <i>inhale:</i> May I seek and share <i>exhale:</i> the love that flows from God.</p>
<p>December 21st word of the day Dream</p> <p>breath prayer <i>inhale:</i> God's dreams unfold <i>exhale:</i> through the work of our hands.</p>	<p>December 22nd word of the day Companionship</p> <p>breath prayer <i>inhale:</i> May I find companionship <i>exhale:</i> when I need a hand to hold.</p>	<p>December 23rd word of the day Promise</p> <p>breath prayer <i>inhale:</i> In this fragile, imperfect world, <i>exhale:</i> may your promises take root.</p>	<p>December 24th word of the day Joy</p> <p>breath prayer <i>inhale:</i> Today I will make space <i>exhale:</i> for joy that grows and grows.</p>	<p>December 25th words of the day Good news</p> <p>breath prayer <i>inhale:</i> Good news is greater than fear. <i>exhale:</i> God will not be silenced.</p>

Advent Calendar
Daily breath prayers



"What Do You Fear?" — Insisting on Hope This Advent

As we enter this holy season of Advent, we begin a new worship journey through a series from A Sanctified Art called **"What Do You Fear? — Insisting on Hope This Advent."** It's a question that feels especially tender and honest for the world we are living in.

Luke's Gospel begins with these striking words: "In the time of Herod..."—a reminder that Jesus entered into a world marked by fear, uncertainty, and hardship. And yet, in the midst of that darkness, the angels appear with a steady refrain: **"Do not fear."**

Fear was very real for Mary, Joseph, the shepherds, and the magi. They didn't pretend it wasn't there—they simply chose not to let fear have the final word. Instead, they moved forward with courage, trust, and hope.

This Advent, we will name our fears honestly. We will acknowledge the places where we feel stretched, overwhelmed, grieving, unsure, or anxious. And we will listen for the whisper of God breaking in, just as God always has: **"Do not be afraid. I am with you."**

Together, we will insist on hope—not a fragile or forced hope, but a deep, steady, resilient hope that rises from our faith and from the strength of this beloved community.

This month at Faith, we will gather for worship, celebration, remembrance, and fellowship. We will make space for joy and also for grief. We will treasure our children's creativity, our choirs' offerings, and our ministries' celebrations. And through it all, we will keep our eyes open for Christ's light breaking into every corner of our lives.

As we walk this path of Advent together, I pray you feel held by the love of God and by the warmth of this church family. Whether this season finds you rejoicing, grieving, exhausted, or hopeful, there is room for you here. You belong here. And you don't have to journey alone.

May the God who whispers "Do not fear" surround you with peace, steady your steps, and guide your heart toward the manger—where love becomes flesh and hope is born again.

With love and expectation, 'Ainise | Lay Person Assigned | Faith UMC

Nihongobu News

The year 2025 is coming to an end. This year, Japan welcomed the first female Prime Minister, Sanae Takaichi. Many felt a new era was upon us. Also, this year has been a tough one for immigrants, like us Issei in the United States. However, even as we face challenges, we want to remember the Lord's grace and end the year with gratitude.

After Thanksgiving, the church will be busy with Christmas, "Nenmatsu" (the end of the year), and "Oshogatsu" (the New Year).

Saturday, December 6th, will be the Southern California Japanese Church Christmas Concert, a major event for Nichigo. Nearly 30 Japanese-speaking churches will gather to celebrate the birth of Christ. On December 16, we will enjoy Sakura Chorus special music. Also, our annual Nichigo Christmas party will take place at Sayaka's house.

On December 24th, our all church Christmas Eve Candlelight service is at 3pm. Come with your family and friends! It will be a joyful service.

On December 28th, we will close the year 2025 with "Nenmatsu reihai." It will be a joint Japanese & English "Nenmatsu" (the year end) service at 9am. We can't forget to thank the Lord for the year.

I just hope that our joyful noise will reach heaven to praise the Lord, just as the angels sang 2000 years ago. Glory to God in the highest, and on earth peace among men with whom he is pleased. (Luke 2:14)

Let us give glory to the Lord, enjoy Christmas, and welcome the New Year with joyful hearts. Amen! 平田

「2025年の恵み」

2025年も終わりに近づいている。今年は10月に女性初の総理大臣を迎え、新しい時代を感じた年であった。アメリカでは移民者に厳しい年であったが、問題に直面しながら、主の恵みを覚え感謝で終わりたいと思う。

11月から年末に向けて教会はイエス様の誕生日で一番忙しい時期になる。12月6日(土)は南加日語教会市民クリスマスコンサートの大会イベント。コンサート後、石巻Missionチームが東北復興支援恵みプロジェクトのブースを設ける。またその後、ユースクリスマスパーティー。各教会から数名のユースが集まり、20-30名になるパーティーと予測される。12月14日は、さくらコーラスの特別賛美をもって喜びの礼拝を守る。礼拝後は、日語部のクリスマス・パーティー。これは毎年恒例の重田宅で行うポットラックパーティーになっている。家にある物をもってきてプレゼント交換するのが、今から楽しみである。12月24日クリスマスイブは、3時に日英合同のキャンドルライト礼拝。家族皆で参加しよう。12月28日年末礼拝は9時から日英合同礼拝。1年の締めくくりとして、主に感謝する礼拝を忘れないでいたい。

イエス様の誕生日をお祝いするこんなに素晴らしい月。喜びが天に届く月であるように祈ろう!

「いと高き所に栄光が神にあるよう。地の上に平和が御心にかなう人々にあるように。」(ルカ 2:14)

Pastor
Becky Hirata

Youth Ministry



Hi Friends and Families,

I hope you all had a wonderful Thanksgiving and Thanksgiving Break. We have so much to be thankful for and all that God continues to do for our Youth Ministry! As we head into December, we are preparing for our Linx Christmas Lock In! We will be collaborating with West LA UMC and Centenary UMC!

The youth will be sharing a time of fellowship, as well as an opportunity to shop and wrap gifts for a Family with our Adopt a Family Program! We are excited to be hosting such a special event for all the Youth to be together!

Due to the schedule of events and holiday season, we will not be having Friday Night Fellowships during the month of December, but the Youth will continue to meet on Sundays at 10:30am. Also at the end of the month on December 28th - 30th, the Asian Camp Bridge Team will be hosting a Lock In at Centenary UMC! More details to come as the leadership team finishes the planning process!

We hope you all have a great Christmas and Holiday season. Let us continue to remember all that God has done for us this year. Thank you for all your continuous love and support for the youth ministry and looking forward to 2026 together!

God Bless,

Darrell Mark

Faith UMC Youth Director

TGIF MYF

JR HIGH | 6TH - 8TH

HIGH SCHOOL | 9TH -12TH



FAITH UMC CHILDREN'S MINISTRY

Nursery to Grade 5



Please join us for Sunday School every Sunday at 10:30am

The Garden (Sunday School) classes are offered for children ages 3 (must turn 3 before September 1) through 5th grade during the 10:30am service.

Child care for children under 3 is available in the nursery located in Room 15. For more information please contact our nursery director Kristen Hayashida at Faihumc.garden@gmail.com.

Nursery leads:

Kristin Katayama
Tam Kobayashi

2nd,3rd,4th & 5th grade:

Leslie Kuwabara
Courtney Shibuya

Garden Teachers:

PK-1st grade
Paul Matsushima
Jolie Miyake
Kelley Mizukami
teacher helper- Alyssa Maracha

Garden Directors:

Amanda Taketa Mark
Kelley Mizukami
Traci Saruwatari



We can't wait to grow together with you.



simple church



YOUNG ADULTS



Thursdays – 1st, 3rd and 5th, 7:30 pm

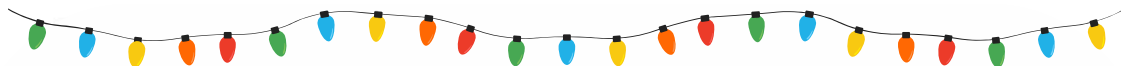
BIBLE STUDY on-line

Topics based on lectionary reading

Wednesdays – 2nd and 4th, 6:30 pm

HANGOUTS in person

Fun dinner discussions, games, movie nights, and outings



December Gatherings

Friday, Dec. 5: Christmas Lights Outing with West LA UMC YAs

Wednesday, Dec. 10: Cookie Baking Night (6:30-9:30pm) @Faith

Friday, Dec. 19: Young Adult Christmas Party & Gift Exchange

Join us at Simple Church where faith, friendship, and fun come together every week!

For specific spiritual needs and pastoral care, contact
Rev. Allison, (310) 217-7000, revallison@faithsouthbay.org



It's December of 2025- it has come very quickly and we are excited to get ready to do special music and share in celebrating the reason for the season - *Jesus.*

There will be new special music during Advent, and we will have December 14 as Garden Ministry special service with the kids singing, doing the Christmas Pageant (unrehearsed), and other special moments. Dec 21, the Sunday before Christmas, we will celebrate with special music by the Instrumental Ensemble, and the Choir with 3 trumpets as accompaniment for the service experience! What a wonderful morning!

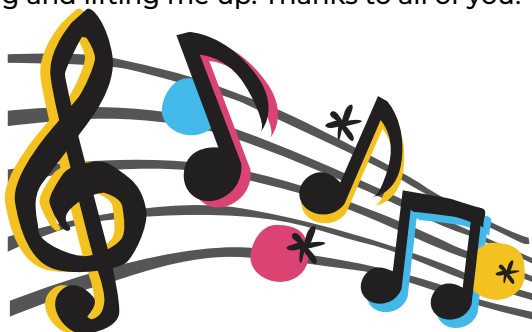
Christmas eve will have the Choirs, Instrumental Ensemble, vocal solo by Cameron Ito, Justin Klunk saxophone solo, and of course the traditional candle lighting with the choir surrounding the congregation in song. It will be a special service at 3:00, only one service, so we look forward to seeing the church full of your joyful faces to celebrate the birth of Jesus. Please join us for this time of celebration!!

Blue Christmas will be December 21 in the evening, and we will have our own Dean Manning accompany us on guitar as we sing carols for this special night. We may go caroling the middle of the month, so anyone interested can join us as we sing at homes where our members are currently residing. Karen Evans will come the first part of January to be special music, and the choirs will be on a music retreat that month to get to know each other, learn new music, and just build a strong sense of what we want to do this coming year. If anyone is interested in becoming involved, please let Ron know. We always can use more and a willingness to serve is all we ask!

And lastly, I want to express my heartfelt thanks for your kind words and support during this difficult time losing my son. A celebration of life is being held on Nov.30 in Omaha, and it will be a time of positive remembering, laughing and crying, and a good way to say goodbye. Any loss is not easy, and I am grateful to have the family of Faith Methodist praying and lifting me up. Thanks to all of you!

Ron Troester

Faith UMC Music Director



PRIME TIMERS

The Prime Timers ministry is open to all seniors and retired members of our community. We hope that you will join us for one of our upcoming events. For more information about the Prime Timers, please contact the church office (310) 217-7000.

Prime Timers Christmas Bash

Saturday, December 13, 2025

12 noon, Faith Fellowship Hall

Lunch will be catered from
Stonefire Grill and Porto's
Cost per person \$20, and...



Please bring 2-3 non-perishable food
items for our holiday food drive!
No glass, expired or opened items.

Please sign up during fellowship time,
or call the church office (310) 217-7000.

SAVE THE DATE

Saturday, January 10, 2026

Gentle Tai Chi





Hey Boomers!



Join us for some Christmas cheer...



Sunday, December 7th

5:30 - 7:30 pm

Back Home in Lahaina

Entertainment by
Wade & Friends

Cost: \$50 per person



Sign up during Sunday fellowship
or call the church office (310) 217-7000.

Paid sign-ups due by November 30.



mele kalikimaka



CHRISTMAS GATHERINGS

December

**05
FRI**

YOUNG ADULT
CHRISTMAS LIGHTS
WITH WEST L.A. UMC
YOUNG ADULTS

**17
WED**

SENIOR HOLIDAY
HANGOUT 8:30AM

**06
SAT**

LINX LOCK-IN
3PM

**18
THUR**

LOGOS BIBLE STUDY
CHRISTMAS HANGOUT
10:30AM

**07
SUN**

BOOMER
CHRISTMAS PARTY
5:30PM

**19
FRI**

YOUNG ADULT
CHRISTMAS GIFT
EXCHANGE &
POTLUCK 7PM

**10
WED**

WIT & MSG CHRISTMAS
PARTY 11AM & YOUNG
ADULT COOKIE BAKING
NIGHT 7PM

**20
SAT**

DEEP ROOTS
CHRISTMAS PARTY

**13
SAT**

PRIMETIMERS
CHRISTMAS BASH &
PATHWAYS HIKING
HOLIDAY GATHERING

**21
SUN**

SHEPHERD'S
MINISTRY
CHRISTMAS LUNCH

**14
SUN**

GARDEN MINISTRY
CHRISTMAS PARTY
AFTER WORSHIP

January

**04
SUN**

EPIPHANY PARTY
POTLUCK AFTER
WORSHIP

**16
TUE**

STAFF CHRISTMAS
LUNCHEON 1PM



The beauty of the Christmas season is upon us once again! Our church will soon be adorned with radiant poinsettias, filling the sanctuary with warmth, color, and the joyful spirit of Christmas.

You are invited to take part in this cherished tradition by purchasing a poinsettia in honor, in memory, or in celebration of a loved one. Your gift will help make our church especially festive this season.

After the Christmas Eve service, you are welcome to take your poinsettia home to enjoy or share it as a meaningful gift with someone special.

Each plant is \$15. Please make checks payable to Faith UMC and note "Poinsettia."

Kindly return your form and payment to the church office by *December 9, 2025.*

GIVEN BY:

PHONE #:

CIRCLE ONE:

IN HONOR OF IN CELEBRATION OF IN MEMORY OF
NAME:

IN HONOR OF IN CELEBRATION OF IN MEMORY OF
NAME:

IN HONOR OF IN CELEBRATION OF IN MEMORY OF
NAME:

IN HONOR OF IN CELEBRATION OF IN MEMORY OF
NAME:



FAITH UNITED METHODIST CHURCH

WORSHIP TIMES

8:30AM

REBROADCAST OF LAST WEEK'S SERVICE

9:00AM

NIHONGOBU JAPANESE LANGUAGE
WORSHIP SERVICE

10:30AM

IN-PERSON WORSHIP SERVICE AND
BROADCAST LIVE STREAM FB | YOUTUBE



FAITHSOUTHBAY



FAITHSOUTHBAY TORRANCE



FAITHSOUTHBAY



FAITHSOUTHBAY.ORG



WAYS
TO

Give

*"Experiencing God
Through Generous Giving"*

THANK YOU FOR GIVING!

Faith United Methodist Church: 2115 W. 182nd Street, Torrance, CA 90504



MAIL

Mail your gift to:
2115 W. 182nd Street
Torrance, CA 90504



IN-PERSON

Drop your gift off in
the MAIL SLOT at
Faith UMC



ONLINE GIVING

PLEDGE OFFERING ONLY!
Make a one-time pledge
contributions or set-up
recurring giving here



VENMO
@FaithUMC-SouthBay

Donate through Venmo!
Add us to your Venmo
friend list for non-pledge
and special donations



PAYPAL
@faithumcsouthbay

Donate through PayPal!
For non-pledge and
special donations

PLEDGE CARDS ARE AVAILABLE TO SUBMIT ONLINE

Pledge card online link: <https://tinyurl.com/faithumcpledgecard2024>

Lectionary Readings Grow deeper in Christ by opening yourself to God’s Word, through the study of the Holy Bible. Listed below are the lectionary scripture readings for the month of March. Our Pastors, TGIF and MYF Directors generally preach from one of the lectionary passages in our Worship Services. We invite you to study these passages in preparation for our worship time as well as a means of growing deeper in Christ.

December 7 – Second Sunday of Advent - PEACE

Isaiah 11:1-10
Psalm 72:1-7
Romans 15:4-13
Matthew 3:1-12

Chrismons
Communion Sunday
Doris Shigihara
receiving Bishop’s
Award

December 14 – Third Sunday of Advent - LOVE

Isaiah 35
Luke 1:47-55
James 5:7-10
Matthew 11:2-11

Garden Children’s
Pageant &
Faith Keiki Hula

December 21 – Fourth Sunday of Advent - JOY

Isaiah 7:10-16
Psalm 80:1-7, 17-19
Romans 1;1-7
Matthew 1:18-25

New Members
Blue Christmas
(5pm)

December 24 – Christmas Eve

Isaiah 9:2-7
Psalm 96
Titus 2:11-14
Luke 2:1-20

Joint Nichigo &
English Candlelight
Worship (3pm)

December 28 – First Sunday after Christmas

Isaiah 63:7-9
Psalm 148
Hebrews 2:10-18
Matthew 2:13-23



JOIN THE HAWAI'I MISSION REBUILD TRIP TO LAHAINA

Are you interested in helping Lahaina UMC rebuild their community after the devastating fires? Please contact Rev. Allison to learn how you can be part of this meaningful mission experience.



- Trip Dates: Possible travel times – Spring (March/April 2026) or late Summer/Fall (August/September 2026), with a possible Winter 2026 trip if there is enough interest.
- Accommodations & Costs: Stay in hotels or Airbnbs (“Economic Stimulus Mode”) or volunteer bunk housing (“Work Camp Mode”), plus travel and meals.
- Work & Skills Needed: Learn what projects are planned and the types of help needed.
- Team Leadership: Help lead and prepare with Rev. Allison
- Fundraising: Explore ways to support our teams and Lahaina’s ongoing recovery.

**Let’s come together in faith, service and compassion
to help Lahaina rebuild and renew.**

VOLUNTEERS NEEDED

Ready to take the next step in your faith? Faith UMC is looking for volunteers for the following ministries:

USHERS & GREETERS

Greeters begin at 10am and stand outside the church and greet visitors and members as they arrive.

Ushers begin at 10am and stand at the sanctuary doors and greet visitors and members as they arrive. If needed, they help distribute candles, bulletins, and gifts. If interested, please email your contact information to worship@faithsouthbay.org

BENTO MINISTRY DRIVERS

Drivers will deliver bentos on the 1st and 3rd Sunday of every month. Deliveries are within the Gardena and Torrance area. With pick-up at the church at 11:30am. If interested, please contact Eva Nishi through the church office.

FINANCE COUNTERS

The finance committee is seeking volunteers to assist with counting once a month. If interested, please see Rev. Allison or Gary Sakaguchi.

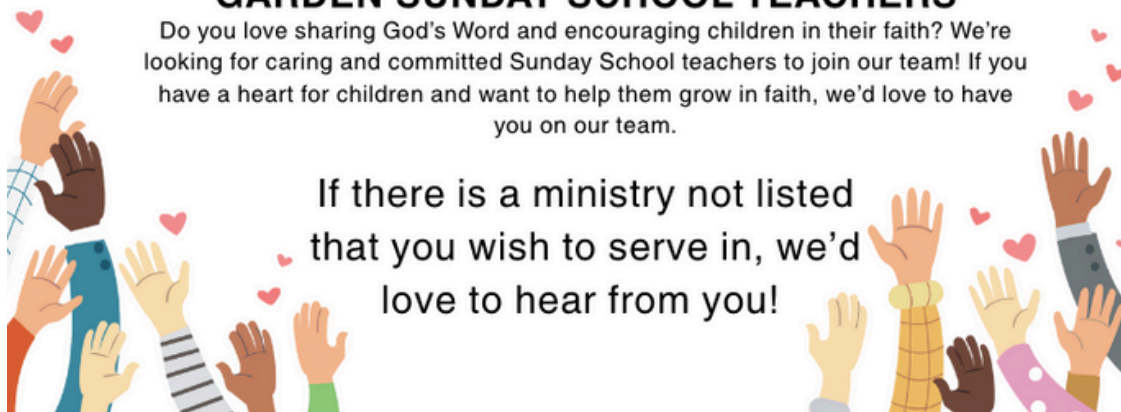
SHEPHERD'S MINISTRY

Do you enjoy visiting others, writing greeting cards, or making phone calls? Become a Shepherd at Faith UMC! Please contact Tam Kobayashi for more information.

GARDEN SUNDAY SCHOOL TEACHERS

Do you love sharing God's Word and encouraging children in their faith? We're looking for caring and committed Sunday School teachers to join our team! If you have a heart for children and want to help them grow in faith, we'd love to have you on our team.

If there is a ministry not listed
that you wish to serve in, we'd
love to hear from you!



ADOPT-A-FAMILY

We are delighted to share that during this holiday season, Faith will once again be part of the *"Adopt-a-Family"* ministry in collaboration with Love INC. This year, we're extending our support and love to a family of five with three sons ages 13, 10, and 6.

We will be providing a Thanksgiving meal as well as gifts, toys, and gift cards for Christmas.

If you would like to join us in this effort, please specify "Adopt-a-Family" with your contributions. Cash, checks, and Venmo contributions will be greatly appreciated. The deadline will be on December 8th to allow the committee ample time for shopping and preparations.

In advance, we want to express our gratitude for your aloha and generous spirit. *Mahalo!*

Loving **GOD...**
Loving **PEOPLE**



Toys for Kids

Please help to brighten Christmas for South Bay families facing challenges by participating in Faith's annual **Toy Drive**.

You can bring joy to children by contributing **toys in the \$10 to \$15 range.**

Also for the teens, **\$15 to \$20 gift cards** will be gratefully appreciated. Cash, checks or Venmo donations will also be graciously accepted. Please indicate "Toy Drive" with your gift.

Please submit your contributions between December 7th to the 21st. All of your donations will benefit **Love INC, In the Name of Christ**, supporting families in need in the South Bay Area.

Thank you for your kind and generous support in spreading love to kids in our community.

*Loving God...
Loving Kids*



DECEMBER CALENDAR

20

SUNDAY

MONDAY

TUESDAY

7

9:00a (A) Nihongobu Worship
10:30a (Chen) TGIF/MYF
10:30a (S) Worship
10:30a Garden Sunday School
12:00p (online) Youth Advisor
12:15p (A) UMW Meeting
1:00p (F) Hula
2:00p (F) Keiki Hula
2:30p (F) GS Troop 5365
4:00p (offsite) Boomers Christmas Party
6:00p (F,A,P) Ping Pong

14

9:00a (A) Nihongobu Worship
10:30a (Chen) TGIF/MYF
10:30a (S) Worship
10:30a Garden Sunday School
1:00p (F) Hula
2:00p (F) Keiki Hula
2:30p (F) GS Troop 5635
3:00p (offsite) Nichigo Christmas Party
5:00p (S) Aile Concert
6:00p (F,A,P) Ping Pong

21 Blue Christmas

9:00a (A) Nihongobu Worship
10:30a (Chen) TGIF/MYF
10:30a (S) Worship
10:30a Garden Sunday School
1:00p (F) Hula
2:00p (F) Keiki Hula
2:30p (F,S) Japanese Movie Night
5:00p (S) Blue Christmas
6:00p (F,A,P) Ping Pong

28

9:00a (A) Nihongobu Worship
10:30a (Chen) TGIF/MYF
10:30a (S) Worship
10:30a Garden Sunday School
1:00p (F) Hula
2:00p (F) Keiki Hula
6:00p (F,A,P) Ping Pong

1 OFFICE CLOSED

9:00a (online) Faithful Healing
7:00p (F) Troop 719
7:00p (online) Nihongobu Bible Study
7:30p (online) J-Manga

8 OFFICE CLOSED

7:00p (online) Nihongobu Bible Study
7:00p (online) Youth Parent Meeting

15 OFFICE CLOSED

9:00a (online) Faithful Healing
7:00p (online) Social Action
7:00p (online) Nihongobu Bible Study
7:30p (online) J-Manga

22 OFFICE CLOSED

7:00p (online) Nihongobu Bible Study

29

7:00p (online) Nihongobu Bible Study

2

9:45a (S) Sakura Chorus
10:30a (online) Bible Study
6:00p (S,F,A,P,16-18) Troop 719

9

9:45a (S) Sakura Chorus
10:30a (online) Bible Study
6:00p (S,F,A,P,16-18) Troop 719

16

10:30a (online) Bible Study
1:00p (F) Staff Christmas Party
6:00p (S,F,A,P,16-18) Troop 719
6:30p (online) Heretics Anonymous

23

10:30a (online) Bible Study
6:00p (S,F,A,P,16-18) Troop 719

30

10:30a (online) Bible Study
6:00p (S,F,A,P,16-18) Troop 719

OFFICE CLOSED

ASIAN CAMP LOCK-IN

3
8:30a (F,A) Senior Hangout
10:00a (22) Music Lessons (KM)
4:30p (A) Music Lessons (KM)
7:00p (A) Faith Ensemble
7:00p (online) Bible Study
7:30o (F) Hula Practice

10
11:00a (offsite) WIT & MSG
Christmas Party
4:30p (A) Music Lessons (KM)
7:00p (A) Faith Ensemble
7:00p (online) Bible Study

17
8:30a (F,A) Senior Hangout
Christmas Party
4:30p (A) Music Lessons (KM)
7:00p (A) Faith Ensemble
7:00p (online) Bible Study

24
Shared Bread
3:00p (S) Christmas Eve Service
4:30p (A) Music Lessons
7:00p (A) Faith Ensemble
7:00p (online) Bible Study

4
9:30a (Nursery) Baby & Me
10:30a (F) Logos Bible Study
6:30p (S) Choir Practice
7:00p (F) Troop 310G
7:00p (online) Blessed Are You
7:00p (F,A,P) Ping Pong
7:00p (S) Crossroads
7:30p (online) Simple Church:
Bible Study

11
6:30p (Chen) Simple Church:
Bible Study
6:30p (S) Choir Practice
7:00p (F,A,P) Ping Pong
7:00p (S) Crossroads

18
9:30a (Nursery) Baby & Me
10:30a (F) Logos Bible Study
6:30p (S) Choir Practice
7:00p (online) Blessed Are You
7:00p (F,A,P) Ping Pong
7:00p (S) Crossroads
7:30p (online) Simple Church:
Bible Study



5
4:30p (K) Blessed Bento Prep
6:30p (F,A,P,16-18) Pack 862

12
11:00a **June Furuta Memorial**
7:00p (Chen) TGIF/MYF Fellowship
7:00p (F,A,P,16-18) Pack 862

19
7:00p (Chen) YA Christmas Gathering
7:00p (F,A,P,16-18) Pack 862

26

6
8:00a (22/23) Music Lessons (KM)
8:00a (Chen) Social Action/
Sandwich Ministry
2:00p (S,F,K) Nichigo Christmas
Concert

13
8:00a (22/23) Music Lessons (KM)
8:00a (Chen) Social Action/Sandwich
Ministry
12:00p (F,A,K) Prime Timers
5:30p (F,K) Pathways Hiking Holiday
Gathering

20
8:00a (22/23) Music Lessons (KM)
9:00a (A) Bento Ministry Prep
11:30a Bento Ministry Drive Thru
1:00p **Pearl Iizuka Memorial**
5:00p (A) Deep Roots

27
8:00a (22/23) Music Lessons (KM)

OFFICE CLOSED

31
4:30p (A) Music Lessons
7:00p (A) Faith Ensemble
7:00p (online) Bible Study

"Whose Crèche Is This?"

Christmas Nativity Showcase

Join the celebration! This December, we're filling the Fellowship Hall with the beauty, wonder, and joy of your Christmas Nativity Crèches.

We would love for you to share your treasured Nativity set in our month-long display—each one telling its own story of hope and Christmas cheer.

Sign up to participate using the online form:
<https://tinyurl.com/whosecrecheisthis>
or stop by the Welcome Table to fill out a form.





We lift up prayers for all of God's Creation. Lord Hear our Prayers.

continued prayers for Healing and Wholeness

Rev. Alan Mark	Elaine Yoshida	Karlynn Fernandez	Polyana 'Isama'u
Alice Kajiya	Eleanor Ngai	Kay Saxton	Priscilla Kandel
Alvena Fukuhara	Emi Hino	Kian Tehrani	Raquel M.Martinez
Amy Higa	Ernie Santiago	Kiki Hashimoto	Rev. Mike Hiranuma
Anthony Anderson, Sr.	Faith Tanaka	Kim Foster	Ron Hamaguchi
Apolosi Lokotui	Florence Nakakura	Kraig Nakano	Richard Ueyuenten
Audrey Goto	Fred Oshiro	Rev. Kim Montenegro	Ruth Hirata
Austin Maeda	Geri Shiraki	Kelsey DeGracia	Ruth Taira
Barbara Tamura	Glenn and Millie	Kenny Medeiros	Sandra Minjarez-
Betty Kobata	Shimizu	Kyle Ichikawa	Grange
Bill Morris	Grace Tochiara	Larry Takumi	Scarlett Bone
Brian Okumura	Grant Hanada	Layne Nakasone	Steph Matsunaga
Cami Bruns	Harriet Tateyama	Linda Jung	Sue Hamada
Chic Miyake	Haru Yasunaga	Liz Harner	Sue Hasegawa
Christine Keim	Hisako Shohara	Lucas Yniguez	Susan Mizuki
Claretta Foster	Ingrid Peterson	Marion Antoku	Susan Slade
Dan Segawa	Irene Munesato	Mary Jung	Tam Kobayashi
Danny Tokudomi	Jack Honda	Mary Marchand	Theresa Apicella
Dan Yamashita	Jayne Watanabe	Mary Tamura	Tommy Sakaguchi
Deron Tokishi	Jehiel Vinluan	Maxine Butcher	Tseyli Mantooth
Diane & Destiny	Jerry Osaka	Mutsuko Nishi	Victoria DelaTorre
Ueda-Banda	Joanne Sato	Nancy Matsushima	Walker Wilkerson
Dr. DoAnn Tsuneo	Jordan Sasaki	Noah Miyagawa-Sue	Wayne Shimizu
Kaneko	Joye Barker	Oscar Philip Bland, Jr.	Whitney Nakayama
Dr. Nguyen	Juliet Koyanagi	Patty Kobayashi	Winnie Osaki
	Kaitlyn Sabedra		

for All Our Saints

Nancy Harada and family, on the passing of Jack Harada.

The Furuta Family, on the passing of June Furuta. (11/12/25). *A Celebration of Life is scheduled for December 12, 2025 at 11:00am. RSVP with Church Office.*

Ron Troester and family, on the passing of his son, Derek Troester. (11/12/25)

Joy Kobashi-Yoneda and family, on the passing of her father, Arthur Kobashi.

Iizuka Family, on the passing of Pearl Iizuka (11/4/25). *A Celebration of Life is scheduled for December 20, 2025 at 1:00pm. RSVP with Church Office.*

Elaine Yoshida, on the passing of her brother, Sadao Larry Sakai (10/16/25)

Ralph Ichikawa, on the passing of his brother, Ken Ichikawa (10/26/25)

those in Community Living & Homecare

Chic Miyake
Doris Kato
Emma Horiuchi
Faith Tanaka
Rev. Harry Fujimoto
Irene & Tak Ryono
Jane Kiyohara
Marion Antoku
Mary Jung
Nobie Shiokari
Ruth Hirata
Sets Asano
Sue Hasegawa

for our Worldwide Community

for the Leadership of our Country and our Churches

for the immigrants: migrants, refugees, asylees

for our siblings in Christ who struggle and in need of God's care

for those who live in through wars, unrest, and violence

for those suffering and rebuilding after national disasters and man-made catastrophes

DEDICATED TO THE FAITH UMC MINISTRY

Keith Hamada
Hito Muneno
Elizabeth Tokunaga
David & Joanne Sato
Lani Walker
Grace Tochiara
Janie Terao
Barbara & Mary Tamura
Daniel Yamashita
Barbara Ueda
Richard & Sandy Uyeunten
Nancy Mine
Nancy Matsushima
in appreciation of Bento Ministries

Ramsay & Amy Higa
Jon & Miki Hayashida
Ken & Sally Sasaki
Edward & Beverly Kambe
Peg Tadakuma
Nancy Matsushima
in memory of Florence Uchida

Susan DeGracia
Masanobu Oshiro
Betty & Johnny Liu
Gilbert & Lynne Vinluan
Ken & Sally Sasaki
Jerry & Carol Tondo
Richard & Sandy Uyeunten
in memory of Carolyn Hyatt

Alice Yee Mark
Edward & Victoria Tani
Norma Ishigo
Jon & Miki Hayashida
in memory of Derek Troester

May Toya
Nancy Matsushima
in memory of Helen Hirano

Nancy Matsushima
in memory of Tak Kato

Joyce Hirayama
in memory of Ted Hirayma

Linda Jung
Norma Ishigo
Jerry & Carol Tondo
Henry & Eva Nishi
Louise Sakamoto
Raymond Isa

in appreciation of Adopt-a-Family

Linda Jung
Elizabeth Tokunaga
in memory of Ken Ichikawa

Brian Uchida
West District UMC
in appreciation of Faith UMC

Stanley & Edith Pang
in memory of Leo & Florence Uchida

Peg Tadakuma
in appreciation of Prime Timers

Living into the Future Foundation
Loaves & Fishes Grant from LITFF

Richard & Sandy Uyeunten
in memory of Mike Hashiro

Lorraine Fong
Susan DeGracia
Linda Jung
Elizabeth Tokunaga
Victoria Tani
Dennis & Karen Sakoda
Ken & Sally Sasaki
Alice Yee Mark
in memory of Kory Kobayashi

Alice Yee Mark
Edward & Victoria Tani
in memory of June Furuta

Alice Yee Mark
in memory of Arthur Kobashi

Ned Morioka
in memory of Fred Tayama

Ivy Toma
in memory of James Toma

Gary & Cheryl Nakata
Ryuko Funakoshi
in appreciation of 2026 Japan Mission Trip

Dennis & Karen Sakoda
Gary & Cheryl Nakata
in memory of Pearl Iizuka

Ned Morioka
in honor of Maralyce Martinez

Elizabeth Tokunaga
in memory of Sadao Larry Sakai

Harry & Ruth Takaki
Coffee for Fellowship

 Thank You 



FAITH UNITED
METHODIST CHURCH



FAITH UMC CHILDREN'S
MINISTRY PRESENTS

FUNDRAISER ON DECEMBER 11

VIRTUAL COMMUNITY FUNDRAISERS



ONLINE ORDERS ONLY

FUNDRAISER CODE NOT VALID FOR IN-PERSON PURCHASES.

When

Thurs., Dec. 11, 2025
Place your order for
pickup or delivery on
Thurs., Dec. 11th!

Where

Available at Panda
Express locations
nationwide
www.pandaexpress.com

How

Online orders only
Apply code **9008833** in the
Fundraiser Code box
during online checkout at
www.pandaexpress.com or
via App

**EARNING RATE: WE RECEIVE BACK 28% OF PRE-TAX SALES.
ALL PROCEEDS WILL BENEFIT THE FAITH GENERAL FUND.**

SPECIAL FUNDRAISERS FOR FAITH



WHAT IT MEANS TO BE UNITED METHODIST

METHODISM 101:

A class for those curious & inquiring, who may be interested in joining Faith, as well as a refresher course for Members

Are you interested in becoming a member of Faith United Methodist Church, but want to learn more about the church and denomination first? Need to dust off your church knowledge and hear about the latest happenings in our church?

Please contact Rev. Allison or Minister 'Ainise so we can build a cohort group together!

Upcoming Events & Special Sundays:

- **MEMBERSHIP SUNDAY** - December 21, 2025, 10am
Worship Service
- **EPIPHANY SUNDAY** - January 4, 2026
 - ALL Small Group Bible Study Epiphany Party
Potluck after Worship
- **BAPTISM OF OUR LORD SUNDAY** - January 11, 2026



ECONOMIC BLACKOUT: NOVEMBER 25 – DECEMBER 2, 2025

In solidarity with communities across the country, many are observing an Economic Blackout — a pause in spending and work — as a peaceful call for change and accountability.

During this time, let's focus our energy on acts of compassion, service, and local giving.

Support community-owned businesses, donate food, and care for one another.

FAITH UNITED METHODIST CHURCH

Presents

日本映画

FREE ADMISSION
& POPCORN!

無料

EVERY THIRD
SUNDAY OF
THE MONTH

JAPANESE MOVIE NIGHT

JAPANESE AUDIO/ENGLISH SUBTITLES



The story of one fractured family offers universal - and deeply moving - observations on the human condition

"A delicate, unforced meditation of the bonds of family and the joys and wonders hidden in everyday life" Turan, LA Times

"Seeming to wander through small incidents and mundane busyness it moves through a brilliant kind of narrative stealth. You are shaken, by the end, at how much you care about these women and how sorry you are to leave their company" A.O. Scott, NY Times

★ ★ ★ ★ ★
**SUNDAY,
DEC 21, 2025
At 2:30 pm**

★ ★ ★ ★ ★

FEATURING
OUR LITTLE SISTER by Kore-eda

FAITH UNITED METHODIST CHURCH / 2115 WEST 182ND STREET, TORRANCE 90504

FOR MORE INFORMATION: 310.217.7000 / FAITHSOUTHBAY.ORG

THERE WILL BE A SHORT REFLECTION AFTER THE MOVIES



FAITH

All-Church **CHARGE CONFERENCE**

Sunday
NOV.
30

Join us as we celebrate our ministries and look ahead with hope. Rev. Saia Tu'itahi, our District Superintendent, will preside. All are welcome!

Sunday, November 30th



After Worship at 1:00pm



Sanctuary, Faith UMC



Thank you for to ALL Committees that submitted
their Charge Conference paperwork.

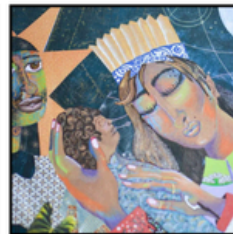
A Light Shines in the Darkness



An Advent Gathering of Prayer & Solidarity
for Palestine and those in ICE Detention

Sunday, November 30th at 4pm

Gathering will be held at
Lakewood First United Methodist Church
4300 Bellflower Blvd., Lakewood, CA 90713



Advent Series 2025: What Do You Fear? — Insisting on Hope This Advent

This Advent season, we invite you to journey with us through a powerful new worship series from A Sanctified Art titled “What Do You Fear?”

Luke’s Gospel begins, “In the time of Herod...” —a reminder that Jesus entered a fearful and uncertain world not so unlike our own. Yet amid the shadows, angels again and again whisper a divine message: “Do not fear.”

From Mary and Joseph to the shepherds and magi, we witness how ordinary people face extraordinary fear with courage, faith, and hope. This Advent, we’ll explore how we, too, can name our fears—without being ruled by them—and discover how God is breaking in even now with good news of great joy for all people.

Save the Advent Dates:

Advent 1 – November 30: Greening of the Church

Our series begins with the Greening of the Church, a hands-on expression of hope in the face of darkness. As we hang wreaths, place greens, and light the first candle, we remember that Christ’s light enters even the most fearful times. The act of preparing God’s house becomes a declaration: We will not be ruled by fear—we will make room for joy, beauty, and love.

Advent 2 – December 7: Hanging of the Chrismons

This week, our Garden Ministry and the children of Faith UMC lead us in the Hanging of the Chrismons. Each handcrafted symbol tells the story of God’s faithfulness through Christ, reminding us that even small hands can create great hope. During this special worship, Bishop Dottie will also join us to honor Doris Shigihara for her faithful service and witness. Together, we celebrate lives that reflect God’s courage and steadfast love in our midst.

Advent 3 – December 14: The “Unrehearsed Christmas Pageant”

Come ready to participate! Our Garden Ministry will guide a joyful, unrehearsed retelling of the Nativity story—reminding us that when we step forward in faith, God meets us in every imperfect, hope-filled moment.

Advent 4 – December 21: Blue Christmas Service at 5:00 PM

For those carrying grief, worry, or loss this season, our Blue Christmas Service offers a gentle space of reflection, prayer, and light. Here we remember that Christ’s hope is tender enough to meet us in sorrow and strong enough to hold us through it.

Blessed Bento (BB) **1st Saturday of the month**

Bentos are prepared and delivered to homebound seniors. On meal day, our BB team will call to confirm your delivery.

If you are not already a participant, please register by calling the church office (310) 217-7000, or email communications@faithsouthbay.org

Keiro: Senior and Caregiver Bento **3rd Saturday of the month**

Bentos are prepared both in-house, and/or provided from local eateries.

To request a meal for yourself, and caregiver (up to 2), please call the church office (310) 217-7000, or email communications@faithsouthbay.org,
on the 1st Friday of each month.

Meals are to be picked up in the church parking lot, 11:30 am – 12:30 pm. If you are unable to pick up, please let us know when reserving your meals.

Wellness Checks

As added support to this program, when we call to confirm our monthly orders, we will be asking 3 simple questions:

1. How are you doing?
2. Is there anything Faith can do to support you?
3. Would you like a pastoral call or visit?



bento ministries

Blessed Bento and Senior Bentos are ministries of Faith and made with love.

With generous Keiro grants to help subsidize these meal programs, monetary gifts are helpful to the sustainability of this ministry. Gifts and checks can be made to Faith UMC: Bento ministry.

Our Community Partners

In addition to the Keiro Grant program, Faith UMC also partners with our local South Bay restaurants and local eateries.

Keiro.

Founded in 1961, Keiro improves the quality of life for older adults and their caregivers in the Japanese American community of Los Angeles, Orange, and Ventura counties. For more information, visit keiro.org.

mochi miso tofu

parenting groups

Families of ALL ages are invited to participate in our monthly... **Intergenerational Family Ministry: MOCHI CLUB**, with pop-ups, movie nights and family activities. **MISO: Mom's in Search Of...** and **TOFU: The Open-Hearted Father's United** are also opportunities for parents of children to connect for conversation, advice, and fellowship, as we grow our children in Faith.

As we start out with fellowship and fun, we hope to grow in our Faith by creating family groups, camping and retreat opportunities for the whole church family and other events and gatherings where we can share knowledge, experience, and raise children spiritually and biblically together. And connect with "Deep Roots" our Family Devotion Dinners as we explore raising our children in faith! **Stay tuned for Mochi Club return as we invigorate our "Sticky Faith" with worship, food, fellowship, and "Messy Church" activities this Fall!**

If you are interested and want to participate, please contact, Minister Ainise 'Isama'u, akisamau@faithsouthbay.org or Rev. Allison Mark, communications@faithsouthbay.org



December 20, 2025

Contact Monica Matsushima for details!

DEEP ROOTS (mochi club) Monthly Devotion, deep discussion on Faith Building and Raising our children with a "Sticky Faith", and Potluck dinner for our Faith Families.

Families rotate hosting in their own homes, at the church, or at fun places to gather.

If you are interested in joining, please contact the pastors, or DEEP ROOTS, communications@faithsouthbay.org

Altar Flower Dedications



Celebrate and remember loved ones by dedicating altar flowers. These arrangements help adorn the altar, and are yours to take after Sunday Worship. Sign up at the Welcome table.

Cost: \$30. Cash or checks payable to Diane Fujimori. Any inquiries please contact Diane at Bloomcloset@yahoo.com

Crafting Opportunities

HOLY HELPING HANDS

Led by Solange Iseri
Come fellowship while creating amazing paper displays. Large murals and wall decorations are used for various church and community events. No experience required!

FABRIC OF FAITH: SEWING, QUILTING & CROCHETING

Our social action team is always accepting handmade: scarfs, hats, and blankets. They are given out by our pastoral care team. These in kind donations are made on your own at home. Occasional tutorial workshops on site.

CARD MAKING

Everyone loves unique handmade cards! They are a perfect way for us to send love and encouragement, to let our church family and community know they are thought of. No on site workshops. Please drop off in the church office anytime.



For questions, please call
the church office (310) 217-7000

Faith United Methodist Church Team Ohana of Faith



Over the last 20+ years, Relay for Life of Torrance has raised over \$4.5 million thanks to generous supporters.

Team Ohana of Faith
2024: Rank #7 - \$10,027



BABY & ME: BIBLE STORY TIME

For Babies and their Caregivers!

Caregivers/guardians and their children ages newborn to age 5.
Join us for a guided time of Faith Baby Talk, Storytime, Prayer, Play, & Singing.
NOTE: On any Thursday, the nursery is available to fellowship and free play.
Please check in with Sandy in the office when you arrive.
For more information contact: Rev. Allison.

Nursery - Room 15

**1ST AND 3RD THURSDAYS
9:30AM - 10:15AM**

Email: communications@faithsouthbay.org • Church office (310) 217-7000

FAITH
UNITED METHODIST CHURCH

CONFIRMATION & MEMBERSHIP CLASSES

**WANT TO GO DEEPER IN
YOUR FAITH JOURNEY?**

**WANT TO
WALK WITH
OTHERS IN
FAITH TOO?**



**FOR YOUTH,
GRADES 8
AND UP**

**FOR ADULTS
WANTING TO
JOIN A FAITH
COMMUNITY**

**FOR ANYONE
INTERESTED IN
METHODISM 101
& REAFFIRMING YOUR FAITH**



**A NEW 2025 CLASS IS BEING RECRUITED FOR
THE SUMMER & FALL 2025 SEASON!**

Sign up with Rev. Allison: communications@faithsouthbay.org

Faith Van and Ride Share

are offering pick-ups and drop-offs
1st and 3rd Sundays

December 7 & 21, 2025

To arrange a ride please
call the church office
(310) 217-7000.



If you are in NEED A RIDE to church, please call
the church office at (310) 217-7000, or contact
Glenn Sakurai at communications@
faithsouthbay.org to arrange for a ride.

Ride Share. If you are able to **OFFER A RIDE**
to seniors in your neighborhood, or be part of the
van pool driver rotation please contact Glenn.

pathways hiking ministry

*Your word is a lamp for my feet,
a light on my path. Psalm 119:105*



Join us for **monthly**, short
day hikes and feel God's
presence in nature.

Pathways Goal: Continuously develop
an outdoor hiking/walking ministry to
improve physical, mental, relational and
spiritual health.

Basic hiking orientation training
required. For more information contact:
Glenn Murakami,
gnmurakami@gmail.com |
Alan Saruwatari, one.nhc@att.net

Faith Hula

1:00 pm every Sunday
(unless otherwise noted)

Please contact
Amanda Taketa Mark
via the church office for
more details and to sign-up!

Teacher: Kevin Tsutsui
Coordinator: Amanda Taketa Mark

KEIKI HULA CLASSES
have begun!

2:00 pm every Sunday
(unless otherwise noted)



Faithful Healing



Join Alan Saruwatari, CST,
shiatsu therapist and QiGong
practitioner at One Natural
Healing Center

1st and 3rd
Mondays 9:00 am

Learn ways to strengthen your natural healing
abilities, and take an active role in the
healing process through meditation
that connects with your Christian faith.
Feel God's love as you calm your mind,
relax your body and brighten your spirit.

Contact Alan Saruwatari at
one.nhc@att.net for zoom information

JOIN A SMALL GROUP BIBLE STUDY!

Theology Book Club

(aka Heretics Anonymous)

Every 1st & 3rd **TUESDAY**

6:30 pm - 8:00 pm, on-line

Delve deeper into your understanding of God, Jesus, and the Holy Spirit by joining our Monday Theology Book Club (Heretics Anonymous) as you read contemporary theologians who challenge our often traditional thinking of the Christian faith.

Contact Roger Butcher or
Danny Hirata for more information
communications@faithsouthbay.org

Tuesday Morning Bible Study

Every Tuesday at 10:30 am, on-line

Mid-Week Bible Study

Every Wednesday at 7:00 pm, on-line

If you've tried Bible studies before, but found them difficult to understand or irrelevant to your life, please join us online using our weekly Bible Study Guide Curriculum, written by Faith Clergy. Our conversations are engaging, honest and practical. Each Study community creates a culture of prayer and connection. Come and grow in your faith together on Tuesdays, Wednesdays, or Thursdays!

<https://us02web.zoom.us/j/5883329633>

Call for Passcode

As a way to continue our lessons from Sunday worship, Study Guides are also available each week on our website, for those who prefer independent study and devotion. If you are interested, please contact the Church via email: communications@faithsouthbay.org or call (310) 217-7000.

Logos Bible Study

Every 1st & 3rd Thursday

10:30 am -12:30 pm, in-person Faith Fellowship Hall

Led by Rev. Allison and Minister Ainise. Come join us if you desire to grow deep in Christ.



*rejoice
always*

*pray
continually*

*give
thanks*

Blessed Are You: Women's Bible Study

Every 1st & 3rd Thursday, on-line
7:00 pm

Bible study group for women of all ages and stages of life. Women spend a special time with God in a tranquil and soothing environment, created especially for a spiritual experience that is comforting, supportive, accepting, and affirming to sisters in faith.

Contact Alice Mark for zoom link,
communications@faithsouthbay.org



Master's Kitchen



Every 5th Saturday

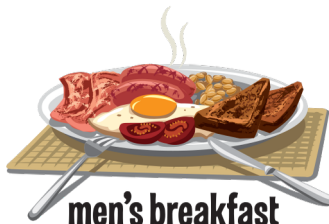
January 31, 2026

May 30, 2026

August 29, 2026

October 31, 2026

Providing 40 nourishing lunch boxes and sack lunches to our community in need.



**2nd Friday
of the month,
8:00 am**

December 12, 2025

Once a month, men of all ages gather for food and fellowship.

Please let Herb Aoyama or Roger Butcher know if you will be attending so they can save you a seat.

Email: communications@faithsouthbay.org

Country Touch Cafe

3717 West 190th Street, Torrance, CA 90504



**Fun, Fellowship,
and Refreshments!**

Senior Hangout

**1st and 3rd Wednesdays
8:30 - 11:30 am**

Next meeting: December 3 & 17, 2025

Come to 'talk story' and hang out. Learn and play... ukulele, mahjong, hand-and-foot, hanafuda.

Bring your own projects... iPads and smartphones, puzzles, coloring, crochet and knitting, crafts.

For more information contact:
Geoff Kai and Cathie Tani, coordinators
communications@faithsouthbay.org



SANDWICH MINISTRY

**Every 2nd Saturday
of the month!**

40 sack lunches are prepared in the Chen Annex (8:00 am - 9:00 am) and delivered to the day laborers at Home Depot.



Our new “Shepherds Ministry” are trained and ready to offer their care and support to our church family and beloved community.

Would you like a visit from our shepherds, wellness phone call check-ins, or to receive thoughtful cards please?

Please let us know how we can support you.
Contact :Tam Kobayashi, (310) 217-7000 or
communications@faithsouthbay.org

Women in Transition

2nd Wednesday, 10:30 am, Faith UMC

Next meeting: Wednesday, December 10

Life’s toughest journeys are easier when shared with others who understand. Our Women in Transition Small Group offers a warm and compassionate space where women can come together to support space where women can come together to support one another through the difficult process of losing a loved one. In this circle of care, we share our stories, lift each other up, and find strength in the fellowship and love that surrounds us. Whether you’re seeking a listening ear, a comforting word, or simply the companionship of others who’ve walked a similar path, we invite you to join us.

For more information,
contact Rev. Allison at
revallison@faithsouthbay.org.



caregivers' support

The Caregivers’ Support provides support to those who are caring for aging parents and loved ones. We also provide resources in the fields of elder care, Alzheimer’s disease, and other end of life concerns.

Please contact Rev. Allison Mark for
caregiver resource information.
communications@faithsouthbay.org



**2nd Wednesday
11:30 am
Faith UMC**

Next meeting: December 10 at 11:30am

The Men’s Support Group (MSG)

is primarily for widowers. We share the experience of loss of loved ones, and explore redefining our lives and significance in face of this loss.

We cook and share foods together under the leadership of Ralph Ichikawa, and listen to participants’ life experience as they see their significance in light of Christian belief.

For more information, contact
Mas Oshiro or contact the church office,
communications@faithsouthbay.org

FAITH STAFF

**Growing deeper in Christ
Going farther for Christ**

Senior Pastor	Rev. Allison Mark Pastor	ext. 202, revallison@faithsouthbay.org
Associate Pastor	Becky Hirata Minister	ext. 204, nichigo@faithsouthbay.org
Lay Person Assigned	Ainise Isama'u	ext. 203, akisamau@faithsouthbay.org
Music Director	Ron Troester	ext. 208, ron.faithumc@gmail.com
Accompanist	Angela Gricar	communications@faithsouthbay.org
Youth Director	Darrell Mark	ext.205, youth@faithsouthbay.org
Office Coordinator	Andie Montoya	ext. 201, admin@faithsouthbay.org communications@faithsouthbay.org
Finance Secretary	Shari Nishihara	ext. 207, finance@faithsouthbay.org
Audio/Visual Ministry	Chad Uemura	audiovisual@faithsouthbay.org
Garden Directors	Kelley Mizukami, Traci Saruwatari, Amanda Taketa	children@faithsouthbay.org faithumc.garden@gmail.com
Social Action	Gary Nakata	outreach@faithsouthbay.org
Lay Leaders	Danny Hirata, Chris Kamatani, Derek Murakami	communications@faithsouthbay.org
Council on Ministries	Shari Chang & Karen Fujimori	communications@faithsouthbay.org
Nihongobu Lay Leader	Mike Kuwabara	communications@faithsouthbay.org
Administrative Council	Karen Murakami	communications@faithsouthbay.org
Finance	Andrew Tani / Ken Ito	finance@faithsouthbay.org
Board of Trustees	Geoff Kai	communications@faithsouthbay.org
Staff Parish Relations	Pearl Iizuka	sprc@faithsouthbay.org
West District Superintendent	Rev. Dr. Siosaia Tu'itahi	dswest@calpacumc.org
L.A. Area Resident Bishop	Bishop Dottie Escobedo-Frank	bishop@calpacumc.org



2115 West 182nd Street, Torrance, CA 90504

T: 310.217.7000 • F: 310.217.0571

E: Communications@faithsouthbay.org • W: www.faithsouthbay.org

 [@faithsouthbay](https://www.instagram.com/faithsouthbay)  [faithsouthbay](https://www.facebook.com/faithsouthbay)  [@faithsouthbaytorrance5054](https://www.youtube.com/faithsouthbaytorrance5054)